

**University of Missouri System
Undergraduate Financial Aid Summary Report
FY2008-FY2012**

(Missouri Resident Undergraduate Students)

Report Prepared by
Dr. La Shonda Carter-Boone
Senior Institutional Research Analyst

Office of Institutional Research and Planning
714 Lewis Hall
University of Missouri System

November 2012

IR&P 2012, Report 3

Boonel@umsystem.edu
573-884-3104

University of Missouri System
Undergraduate Financial Aid Summary Report
FY2008-FY2012
(Missouri Resident Undergraduates)

Executive Summary

The *Undergraduate Financial Aid Summary Report* includes undergraduate financial aid distribution patterns for the University of Missouri System and the four campuses from fiscal year 2007-08 (FY08) through fiscal year 2011-12 (FY12). In the first part of this report nine questions are addressed at the UM System level:

1. How many students received aid and what type of aid was received?
2. Has grant aid kept pace with increases in tuition and required fees?
3. How has the distribution of institutional gift aid changed over the past five years?
4. How has the distribution of PLUS loans changed over the past five years?
5. What percent of tuition and required fees is met by grant aid?
6. How has the number of aid recipients with need changed by income level?
7. How do financial aid packages vary by income level?
8. For students that have need, what is the average amount of unmet financial need?
9. Can families afford to pay the expected family contribution?

The second part of the report provides campus-

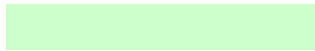
- The number of institutional grants awarded based on need declined from 4,301 in FY08 to 4,180 in FY12. During the same time period there has been a substantial increase in the number of merit awards given to students both with and without need

The contextual basis of financial aid distribution

Less than 20% of undergraduates attending the University of Missouri pay the entire cost of attendance out-of-pocket. The majority of students receive some type of financial assistance to attend the University in the form of grants, scholarships, work study or loans. In addition, financial assistance comes from a wide variety of sources including the state and federal governments, profit and non-profit organizations, and the University (institutional gift aid). In addition, a significant amount of financial aid that is distributed is based on financial need (i.e. it is documented that the student's family cannot afford the entire cost of attendance). A student must complete a Free Application for Federal Student Aid (FAFSA) in order to determine the extent of financial need and the type and amount of aid based on need that can be awarded.

Many of the tables and figures throughout this report reference terms such as budgeted cost of attendance, financial need, grant aid, and unmet need. Assuming that a student has completed a FAFSA, Figure A.1 is provided to give an overview of how a student's financial aid package is determined.

\$23,455 Budgeted Cost of Attendance includes tuition & required fees, books, and living expenses



Foremost, a BUDGETED COST OF ATTENDANCE (COA) is determined for every

Section I

System-wide Financial Aid Trends of Full-Time, Degree-Seeking Missouri Undergraduates from FY08 to FY12

PLEASE NOTE: The findings below highlight system-wide trends at the University of Missouri. Financial aid trends may differ by campus and are included in the second part of this report.

1. How many students received aid and what type of aid was received?

The total number of full-time, degree-seeking resident undergraduates steadily increased over the past five years from 29,587 to 32,904, an increase of over 10%. With this increase in enrollment, there has been an 30.8% increase in the number of students with financial need from 14,326 in FY08 to 18,734 in FY12 (Figure 1.1).

2. Has grant aid kept pace with increases in tuition and required fees?

Over the past five years tuition and required fees increased 11.2% and the budgeted cost of attendance increased 16.3% while average grant aid increased 5.6%. The overall trend is that there is an increasing gap between tuition and required fees and the average grant aid awarded to undergraduates (Figure 1.2).

3. How has the distribution of institutional gift aid changed over the past five years?

While there was a decline in the overall number of students with need that received institutional grant aid, the average institutional grant award increased nearly \$488 over the past five years. In addition, there has been a dramatic shift in the type of institutional gift aid awarded to students with need. In FY08 nearly 48% of all institutional grant aid awarded to students with need was awarded based on merit and 41% was awarded based on need. By FY12 only 35% of all institutional grant aid awarded to students with need was based on need and 59% was based on merit (Table 1.1).

4. How has the distribution of PLUS loans changed over the past five years?

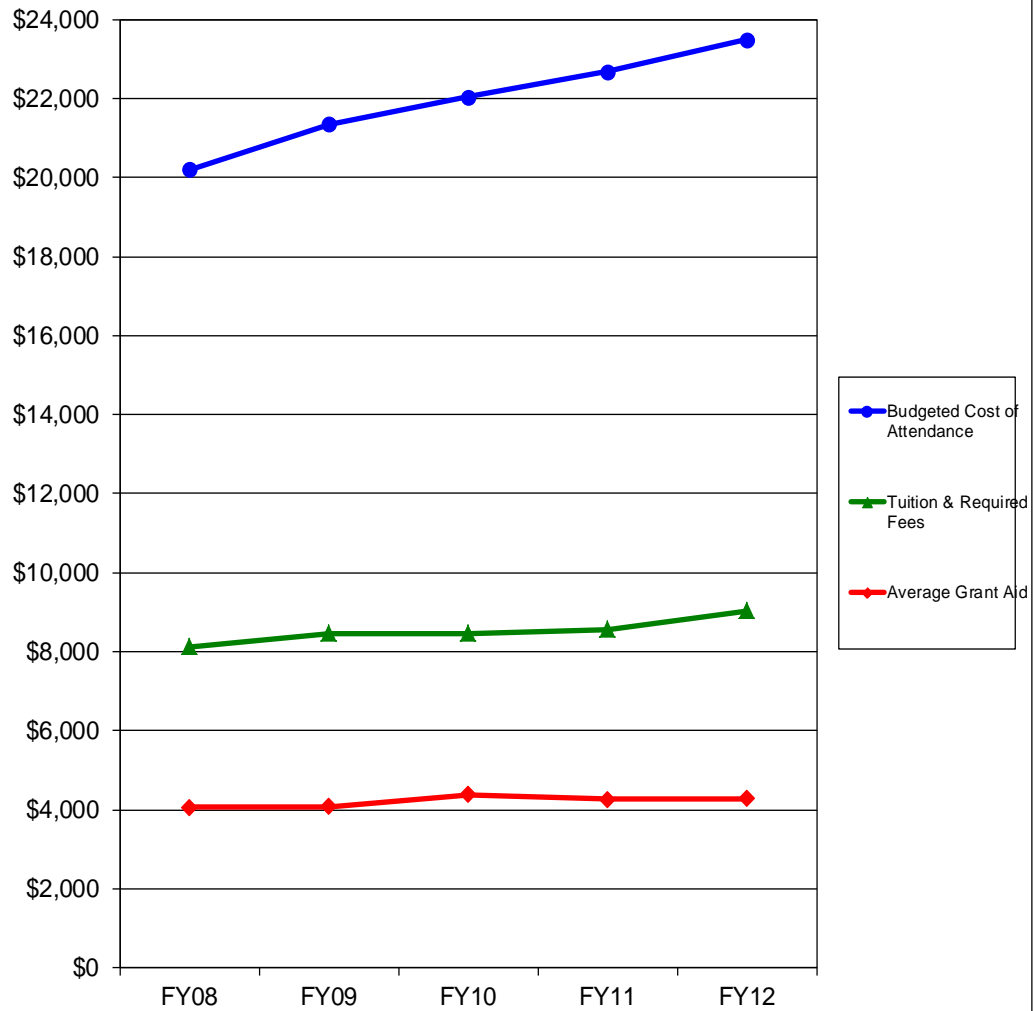
The volume of Parent Loans for Undergraduate Students (PLUS loans) increased from FY08 to FY12 for both students with and without financial need. In FY08 3,426 parents borrowed on average \$9,613 to meet their child's education expenses. Five years later, nearly 4,200 parents borrowed approximately \$10,473 to cover these expenses. System-wide, the total amount of PLUS loans distributed increased from \$32.9 million in FY08 to \$43.9 million in FY12 (Table 1.4).

5. What percent of tuition and required fees is met by grant aid?

Lower income students have the most financial need and on average receive much more grant aid than higher income students. In FY08, grant aid covered nearly 81% of tuition and required fees for students with income less than \$20,000 and 76% for students with income between \$20,000 and \$40,000. By FY12, grant aid covered 74% of tuition and required fees for students with income less than \$20,000 and 76% for students with income between \$20,000 and \$40,000. Grant aid continues to cover a smaller percentage of the tuition a

| FY08 | FY09 | FY10 | FY11 | FY12 | 5-yr # Change | 5-yr % Change |
|------|------|------|------|------|------------------|------------------|
|------|------|------|------|------|------------------|------------------|

Figure 1.2
 Tuition and Required Fees vs. 9 -Month Cost of Attendance and Grant Aid for
 Full-time Undergraduate Missouri Residents at the University of Missouri
 System, FY08 - FY12



| | FY08 | FY09 | FY10 | FY11 | FY12 | 5-yr # Change | 5-yr % Change |
|-----------------------------|----------|----------|----------|----------|----------|------------------|------------------|
| Budgeted Cost of Attendance | \$20,210 | \$21,354 | \$22,039 | \$22,682 | \$23,501 | \$3,291 | 16.3% |
| Tuition & Required Fees | \$8,123 | \$8,456 | \$8,464 | \$8,566 | \$9,035 | \$913 | 11.2% |
| Average Grant Aid | \$4,059 | \$4,078 | \$4,383 | \$4,272 | \$4,287 | \$228 | 5.6% |

Note: Undergraduate Pharmacy and Medical students have been removed from this analysis.
 Source: UIDS, IPEDS Institutional Characteristics, PeopleSoft
 IR&P/LCB 11/12

Table 1.1

Average Institutional Grant Awards Distributed to Resident, Full-time, Degree-Seeking Undergraduates at the University of Missouri System, FY08 - FY12

| Students with Need | FY08 | | FY09 | | FY10 | | FY11 | | FY12 | |
|---------------------|---------------|----------------|---------------|----------------|---------------|----------------|---------------|----------------|---------------|----------------|
| | # of Awards | Average Award | # of Awards | Average Award | # of Awards | Average Award | # of Awards | Average Award | # of Awards | Average Award |
| Type of Award Need* | 4,301 | \$2,045 | 3,969 | \$2,493 | 3,742 | \$1,999 | 3,173 | \$2,290 | 4,180 | \$2,482 |
| Merit | 5,073 | \$2,790 | 5,651 | \$2,909 | 6,080 | \$3,191 | 6,667 | \$3,086 | 7,092 | \$3,210 |
| Other** | 1,099 | \$2,268 | 641 | \$2,145 | 716 | \$2,341 | 748 | \$2,207 | 729 | \$2,568 |
| Total | 10,473 | \$2,429 | 10,261 | \$2,700 | 10,538 | \$2,710 | 10,588 | \$2,785 | 12,001 | \$2,917 |

| Students without Need | FY08 | | FY09 | | FY10 | | FY11 | | FY12 | |
|-----------------------|--------------|----------------|--------------|----------------|--------------|----------------|--------------|----------------|--------------|----------------|
| | # of Awards | Average Award | # of Awards | Average Award | # of Awards | Average Award | # of Awards | Average Award | # of Awards | Average Award |
| Type of Award Merit | 4,603 | \$3,015 | 5,337 | \$3,101 | 5,095 | \$3,138 | 4,969 | \$3,133 | 5,073 | \$3,153 |
| Other** | 941 | \$2,476 | 625 | \$2,104 | 533 | \$2,396 | 476 | \$2,412 | 457 | \$2,519 |
| Total | 5,544 | \$2,924 | 5,962 | \$2,997 | 5,628 | \$3,068 | 5,445 | \$3,070 | 5,530 | \$3,101 |

*Institutional grant aid awarded to students with need includes both need and merit-based aid.

**Includes athletic aid and tuition waivers.

Source: UIDS, PeopleSoft

IR&P/LCB 11/12

Table 1.2

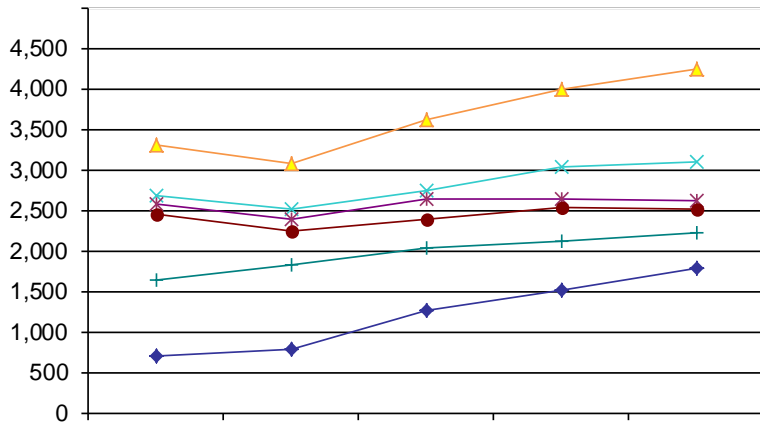
In.607

92.12

Table 1.3

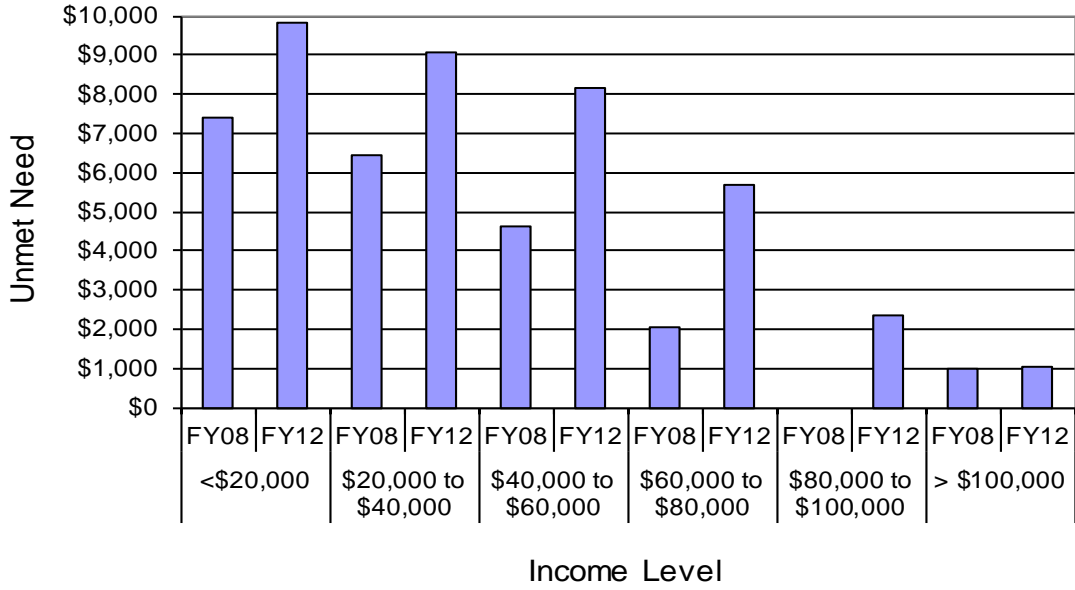
| Income Level | Expected | | | | % Unmet | Expected | | | | % Unmet |
|-----------------------|---------------------|----------|------------|-------|---------|---------------------|----------|------------|-------|---------|
| | Family Contribution | Gift Aid | Work Study | Loans | | Family Contribution | Gift Aid | Work Study | Loans | |
| <\$20,000 | 3% | 31% | 1% | 30% | 35% | 2% | 27% | 1% | 31% | 39% |
| \$20,000 to \$40,00 | 14% | 30% | 1% | 25% | 30% | 7% | 29% | 1% | 26% | 37% |
| \$40,000 to \$60,000 | 29% | 24% | 1% | 23% | 23% | 20% | 22% | 1% | 22% | 35% |
| \$60,000 to \$80,000 | 52% | 18% | 1% | 19% | 10% | 40% | 16% | 0% | 20% | 24% |
| \$80,000 to \$100,000 | 72% | 14% | 0% | 14% | 0% | 61% | 12% | 0% | 16% | 11% |
| >\$100,000 | 67% | 11% | 0% | 17% | 5% | 72% | 10% | 0% | 13% | 5% |

Source: UIDS, PeopleSoft
IR&P/LCB 11/12



Source: UIDS, PeopleSoft
IR&P/LCB 11/12

Figure 1.5
Average Amount of Unmet Financial Need by Income Level
at the University of Missouri System, FY08 vs. FY12



Source: UIDS, PeopleSoft
 IR&P/LCB 11/12

Table 1.5

| | FY08 | FY09 | FY10 | FY11 | FY12 | FY08 | FY09 | FY10 | FY11 | FY12 | # Change FY08-FY12 | % Change FY08-FY12 |
|-------------------------------------|------------|------------|------------|------------|------------|------|------|------|------|------|-----------------------|-----------------------|
| Total Enrolled for 9 months (N) | 3,301 | 3,071 | 3,609 | 3,995 | 4,231 | | | | | | 930 | 28% |
| Cost of Attendance | \$21,325 | \$22,395 | \$23,125 | \$23,996 | \$24,619 | | | | | | \$3,295 | 15% |
| Less Expected Family Contribution* | <u>734</u> | <u>813</u> | <u>588</u> | <u>506</u> | <u>385</u> | 3% | 4% | 3% | 2% | 2% | -348 | -47% |
| Financial Need | 20,591 | 21,582 | 22,537 | 23,490 | 24,234 | 97% | 96% | 97% | 98% | 98% | 3,643 | 18% |
| Less Grant Aid | 6,573 | 6,586 | 7,075 | 6,854 | 6,726 | 31% | 29% | 31% | 29% | 27% | 153 | 2% |
| Unmet Need | \$14,018 | \$14,996 | \$15,462 | \$16,636 | \$17,508 | 66% | 67% | 67% | 69% | 71% | 3,490 | 25% |
| % Grant Aid that Met Financial Need | 32% | 31% | 31% | 29% | 28% | | | | | | | |
| Non-Grant Sources to Meet | | | | | | | | | | | | |

Table 1.5 (Continued)

| | FY08 | FY09 | FY10 | FY11 | FY12 | FY08 | FY09 | FY10 | FY11 | FY12 | # Change FY08-FY12 | % Change FY08-FY12 |
|---------------------------------|------|------|------|------|------|------|------|------|------|------|-----------------------|-----------------------|
| Total Enrolled for 9 months (N) | | | | | | | | | | | | |

Section II

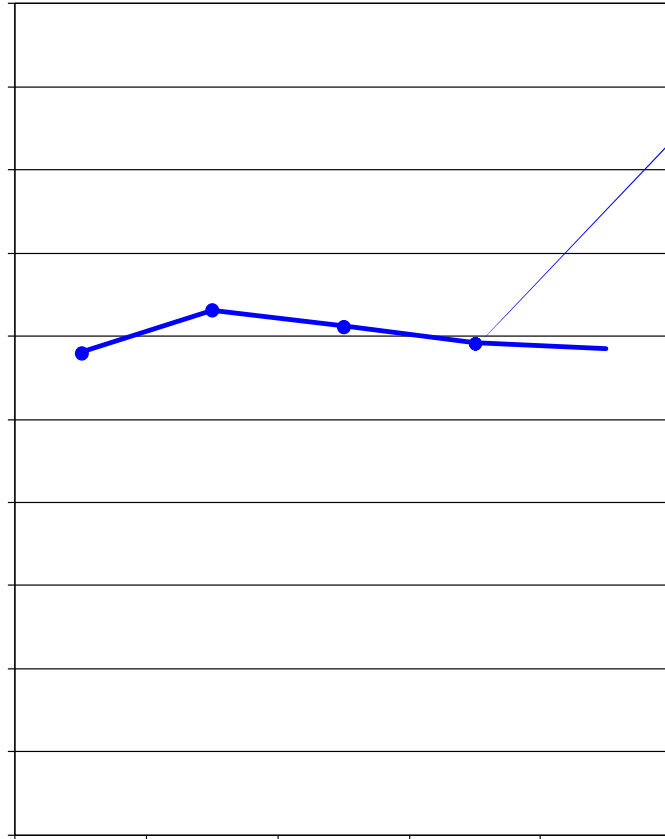
Campus-Level Financial Aid Trends of Full-Time, Degree-Seeking Missouri Undergraduates from FY08 to FY12

UM-Columbia (Table and Figure 2 series)

UM-Kansas City (Table and Figure 3 series)

Missouri S&T (Table and Figure 4 series)

UM-St. Louis (Table and Figure 5 series)



| | FY08 | FY09 | FY10 | FY11 | FY12 | 5-yr # Change | 5-yr % Change |
|----------------------------------------------|--------------|--------------|--------------|--------------|--------------|------------------|------------------|
| Completed FAFSA, did not have a need | 3,570 | 4,034 | 4,222 | 4,101 | 4,110 | 540 | 15.1% |
| Grant aid, no FAFSA | <u>2,232</u> | <u>2,284</u> | <u>1,898</u> | <u>1,819</u> | <u>1,741</u> | <u>-491</u> | <u>-22.0%</u> |
| Aid recipients with no need | 5,802 | 6,318 | 6,120 | 5,920 | 5,851 | 49 | 0.8% |
| Aid recipients with need* | 6,844 | 7,348 | 8,044 | 8,601 | 9,071 | 2,227 | 32.5% |
| Full pay / No aid | <u>4,561</u> | <u>4,380</u> | <u>4,229</u> | <u>4,291</u> | <u>4,315</u> | <u>-246</u> | <u>-5.4%</u> |
| Total of all full-time, Degree-Seeking MO UG | 7,207 | 18,046 | 18,393 | 18,812 | 19,237 | 2,030 | 11.8% |

* All aid recipients with need completed a FAFSA and were not expected to pay the entire cost of attendance.

Source: UIDS, EMSAS, and PeopleSoft
IR&P/LCB 11/12

Table 2.1

Students with Need

| Type of Award | # of Awards | Average Award | # of Awards | Average Award | # of Awards | Average Award | # of Awards | Average Award | # of Awards | Average Award |
|---------------|-------------|---------------|-------------|---------------|-------------|---------------|-------------|---------------|-------------|---------------|
| Need* | 3,310 | \$2,023 | 2,991 | \$2,640 | 3,134 | \$2,035 | 2,558 | \$2,427 | 3,189 | \$2,762 |
| Merit | 2,311 | \$2,790 | 2,490 | \$2,805 | 2,673 | \$2,955 | 2,901 | \$2,892 | 3,094 | \$2,877 |
| Other** | 181 | \$1,390 | 234 | \$1,403 | 322 | \$1,907 | 276 | \$1,859 | 288 | \$2,038 |
| Total | 5,802 | \$2,309 | 5,715 | \$2,661 | 6,129 | \$2,430 | 5,735 | \$2,635 | 6,571 | \$2,784 |

Students without Need

| Type of Award | # of Awards | Average Award | # of Awards | Average Award | # of Awards | Average Award | # of Awards | Average Award | # of Awards | Average Award |
|---------------|-------------|---------------|-------------|---------------|-------------|---------------|-------------|---------------|-------------|---------------|
| Merit | 3,024 | \$2,717 | 3,351 | \$2,812 | 3,495 | \$2,962 | 3,457 | \$2,816 | 3,890 | \$3,180 |

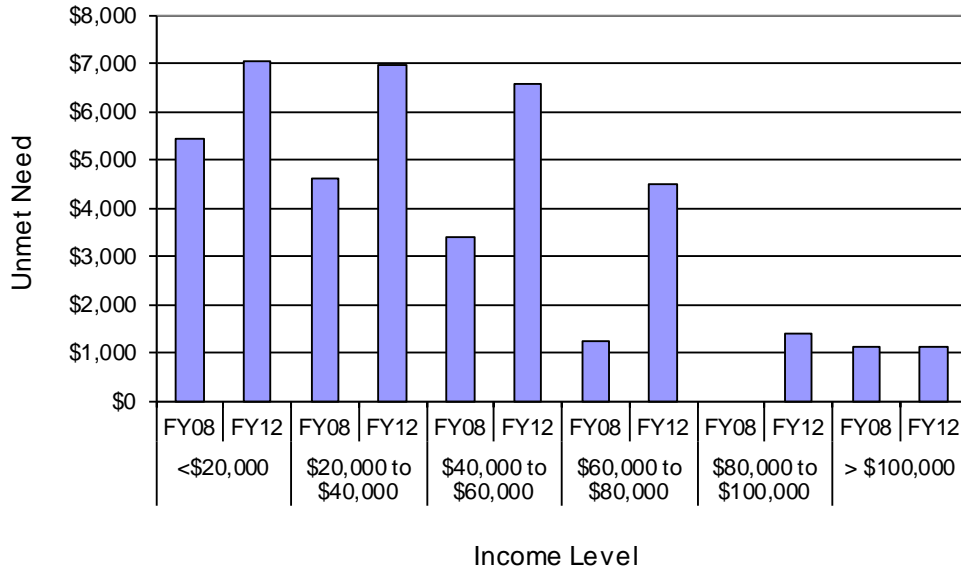
Table 2.3

Total Financial Aid as % of Cost of Attendance by Income Level at the University of Missouri-Columbia, FY08 & FY12

| Income Level | FY08 | | | | | FY12 | | | | |
|-----------------------|------------------------------|----------|------------|-------|-------------|------------------------------|----------|------------|-------|-------------|
| | % COA Met by Source of Aid | | | | % Unmet COA | % COA Met by Source of Aid | | | | % Unmet COA |
| | Expected Family Contribution | Gift Aid | Work Study | Loans | | Expected Family Contribution | Gift Aid | Work Study | Loans | |
| <\$20,000 | 3% | 37% | 0% | 32% | 28% | 1% | 34% | 1% | 32% | 32% |
| \$20,000 to \$40,00 | 14% | 34% | 1% | 26% | 25% | 6% | 34% | 1% | 28% | 31% |
| \$40,000 to \$60,000 | 30% | 27% | 1% | 25% | 17% | 21% | 25% | 1% | 23% | 30% |
| \$60,000 to \$80,000 | 54% | 20% | 1% | 20% | 5% | 42% | 17% | 0% | 20% | 21% |
| \$80,000 to \$100,000 | 76% | 13% | 0% | 11% | 0% | 65% | 12% | 0% | 17% | 6% |
| >\$100,000 | 64% | 11% | 0% | 19% | 6% | 71% | 9% | 0% | 15% | 5% |

Source: UIDS, PeopleSoft
IR&P/LCB 11/12

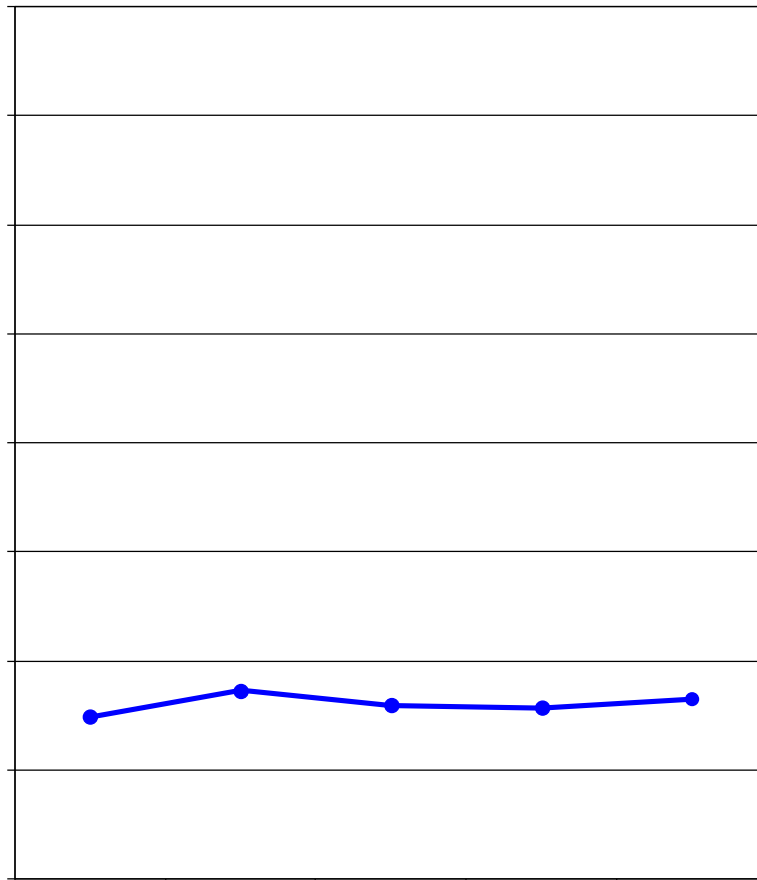
Figure 2.5
 Average Amount of Unmet Financial Need by Income Level at
 the UM-Columbia, FY08 vs. FY12



Source: UIDS, PeopleSoft
 IR&P/LCB 11/12

Table 2.5

| | FY08 | FY09 | FY10 | FY11 | FY12 | FY08 | FY09 | FY10 | FY11 | FY12 | # Change FY08-FY12 | % Change FY08-FY12 |
|-------------------------------------|------------|------------|------------|------------|------------|------|------|------|------|------|-----------------------|-----------------------|
| Total Enrolled for 9 months (N) | 1,245 | 1,159 | 1,347 | 1,443 | 1,540 | | | | | | 295 | 24% |
| Cost of Attendance | \$19,472 | \$20,673 | \$20,866 | \$21,530 | \$22,337 | | | | | | \$2,864 | 15% |
| Less Expected Family Contribution* | <u>617</u> | <u>733</u> | <u>563</u> | <u>415</u> | <u>303</u> | 3% | 4% | 3% | 2% | 1% | -314 | -51% |
| Financial Need | 18,855 | 19,940 | 20,303 | 21,115 | 22,034 | 97% | 96% | 97% | 98% | 99% | 3,178 | 17% |
| Less Grant Aid | 7,161 | 7,541 | 7,884 | 7,959 | 7,681 | 37% | 36% | 38% | 37% | 34% | 520 | 7% |
| Unmet Need | \$11,694 | \$12,399 | \$12,418 | \$13,156 | \$14,353 | 60% | 60% | 60% | 61% | 64% | 2,659 | 23% |
| % Grant Aid that Met Financial Need | 38% | 38% | 39% | 38% | 35% | | | | | | | |
| Non-Grant Sources to Meet | | | | | | | | | | | | |



| | FY08 | FY09 | FY10 | FY11 | FY12 | 5-yr # Change | 5-yr % Change |
|-----------------------------------------------|------------|------------|------------|------------|------------|------------------|------------------|
| Completed FAFSA, did not have a need | 440 | 549 | 507 | 483 | 523 | 83 | 18.9% |
| Grant aid, no FAFSA | <u>304</u> | <u>316</u> | <u>290</u> | <u>301</u> | <u>302</u> | -2 | -0.7% |
| Aid recipients with no need | 744 | 865 | 797 | 784 | 825 | 81 | 10.9% |
| Aid recipients with need* | 2,404 | 2,490 | 2,863 | 3,168 | 3,247 | 843 | 35.1% |
| Full pay / No aid | 554 | 533 | 483 | 495 | 371 | -183 | -33.0% |
| Total of all full- time, Degree-Seeking MO UG | 3,702 | 3,888 | 4,143 | 4,447 | 4,443 | 741 | 20.0% |

* All aid recipients with need completed a FAFSA and were not expected to pay the entire cost of attendance.

Note: Undergraduate Pharmacy and Medical students have been removed from this analysis.

Source: UIDS, EMSAS, and PeopleSoft
IR&P/LCB 11/12

Table 3.1

| Students with Need | | | | | | | | | | |
|---------------------|-------------|---------------|-------------|---------------|-------------|---------------|-------------|---------------|-------------|---------------|
| Type of Award Need* | # of Awards | Average Award | # of Awards | Average Award | # of Awards | Average Award | # of Awards | Average Award | # of Awards | Average Award |
| | 716 | \$1,643 | 447 | \$1,976 | 118 | \$2,005 | 122 | \$1,796 | 153 | \$1,431 |
| Merit | 585 | \$2,725 | 1,024 | \$3,509 | 1,158 | \$3,716 | 1,262 | \$3,136 | 1,391 | \$3,213 |
| Other** | 666 | \$2,539 | 44 | \$4,449 | 92 | \$2,731 | 83 | \$3,686 | 82 | \$4,376 |
| Total | 1,967 | \$2,268 | 1,515 | \$3,084 | 1,368 | \$3,502 | 1,467 | \$3,055 | 1,626 | \$3,104 |

Students w 28.692 -0 T

Table 3.3

Total Financial Aid as % of Cost of Attendance by Income Level at the University of Missouri-Kansas City, FY08 & FY12

| Income Level | FY08 | | | | | FY12 | | | | |
|-----------------------|------------------------------|----------|------------|-------|-------------|------------------------------|----------|------------|-------|-------------|
| | % COA Met by Source of Aid | | | | % Unmet COA | % COA Met by Source of Aid | | | | % Unmet COA |
| | Expected Family Contribution | Gift Aid | Work Study | Loans | | Expected Family Contribution | Gift Aid | Work Study | Loans | |
| <\$20,000 | 4% | 28% | 2% | 29% | 37% | 1% | 23% | 1% | 29% | 46% |
| \$20,000 to \$40,00 | 12% | 25% | 2% | 22% | 39% | 7% | 23% | 1% | 23% | 46% |
| \$40,000 to \$60,000 | 28% | 19% | 2% | 19% | 32% | 19% | 17% | 1% | 21% | 42% |
| \$60,000 to \$80,000 | 49% | 14% | 2% | 16% | 19% | 35% | 12% | 1% | 16% | 36% |
| \$80,000 to \$100,000 | 69% | 12% | 1% | 13% | 5% | 57% | 9% | 1% | 14% | 19% |
| >\$100,000 | 76% | 10% | 1% | 20% | 0% | 77% | 8% | 0% | 12% | 3% |

Source: UIDS, PeopleSoft
IR&P/LCB 11/12

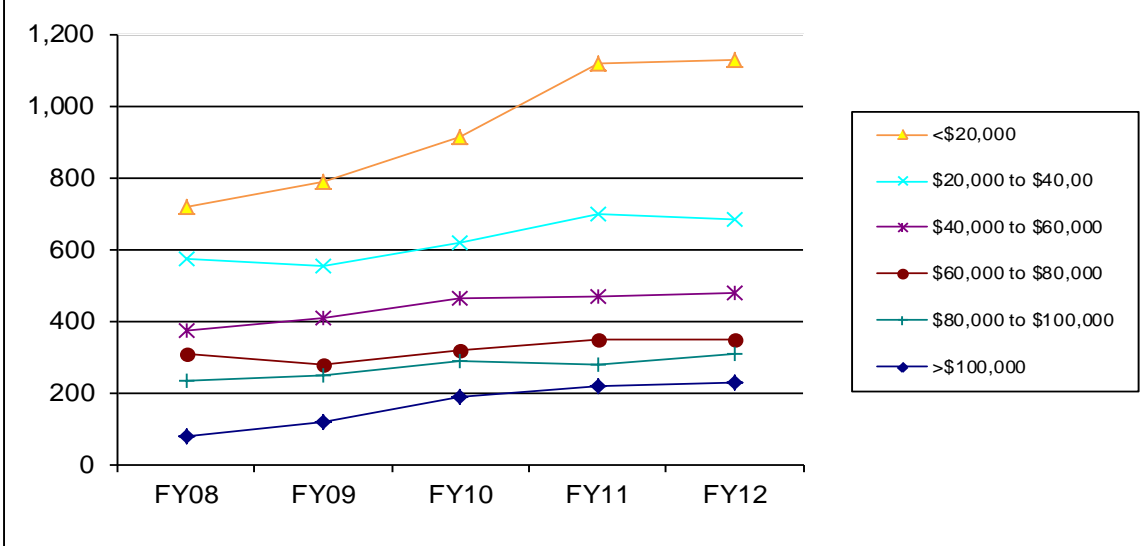
Table 3.4

Average PLUS Loan Awarded to PLUS Loan Recipients, Resident, Full-time, 654, (d t9104 0 0 11.115927 156]TJ 4.538 0 Td [(4)1(40)]TJ 3

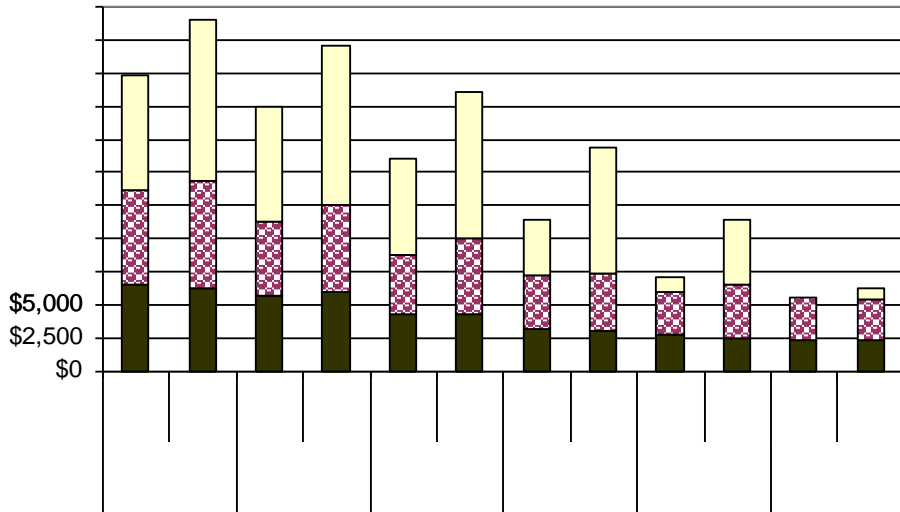
| | FY11 | | FY12 | |
|--------------|------|---------|------|---------|
| | N | Mean | N | Mean |
| With Need | 129 | \$8,291 | 109 | \$8,447 |
| Without Need | 52 | 10,055 | 83 | 9,821 |
| | 181 | \$8,798 | 192 | \$9,041 |

Source: UIDS, PeopleSoft
IR&P/LCB 11/12

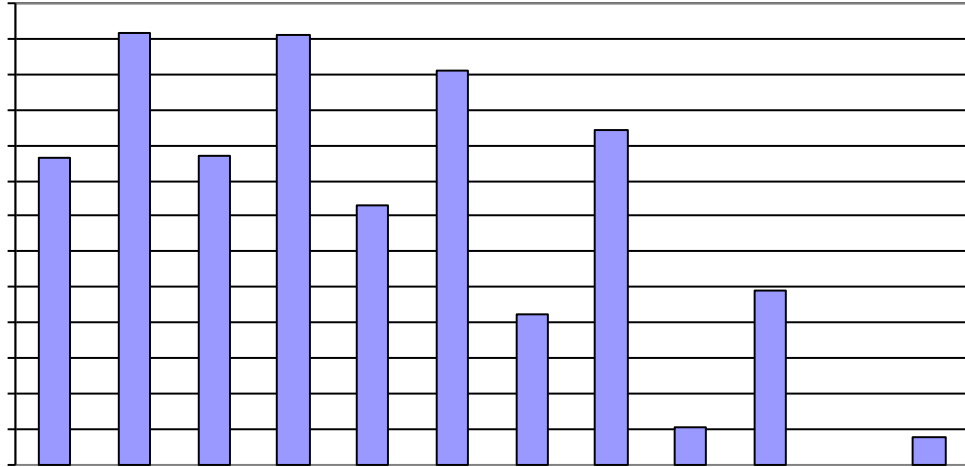
Figure 3.3
 Number of Full-time, Degree-Seeking 9-Month Undergraduate Missouri Residents with Financial Need by Income Level at the University of Missouri -Kansas City, FY08 - FY12



Source: UIDS, PeopleSoft
 IR&P/LCB 11/12



Source: UIDS, PeopleSoft
 IR&P/LCB 11/12



Source: UIDS, PeopleSoft
IR&P/LCB 11/12

Table 3.5

| | FY08 | FY09 | FY10 | FY11 | FY12 | FY08 | FY09 | FY10 | FY11 | FY12 | # Change FY08-FY12 | % Change FY08-FY12 |
|-------------------------------------------------------------|------------|------------|------------|------------|------------|------|------|------|------|------|-----------------------|-----------------------|
| Total Enrolled for 9 months (N) | 716 | 787 | 913 | 1,120 | 1,127 | | | | | | 411 | 57% |
| Cost of Attendance | \$23,226 | \$24,103 | \$25,284 | \$26,260 | \$26,970 | | | | | | \$3,744 | 16% |
| Less Expected Family Contribution* | <u>831</u> | <u>929</u> | <u>635</u> | <u>571</u> | <u>394</u> | 4% | 4% | 3% | 2% | 1% | -437 | -53% |
| Financial Need | 22,395 | 23,174 | 24,649 | 25,689 | 26,576 | 96% | 96% | 97% | 98% | 99% | 4,181 | 19% |
| Less Grant Aid | 6,506 | 6,662 | 6,961 | 6,375 | 6,335 | 28% | 28% | 28% | 24% | 23% | -171 | -3% |
| Unmet Need | \$15,889 | \$16,511 | \$17,688 | \$19,314 | \$20,241 | 68% | 69% | 70% | 74% | 75% | 4,352 | 27% |
| % Grant Aid that Met Financial Need | 29% | 29% | 28% | 25% | 24% | | | | | | | |
| Non-Grant Sources to Meet Remaining Unmet Financial Need | | | | | | | | | | | | |

Table 4.1

Students with Need

| # of Awards | Average Award | # of Awards | Average Award | # of Awards | Average Award | # of Awards | Average Award | # of Awards | Average Award |
|-------------|---------------|-------------|---------------|-------------|---------------|-------------|---------------|-------------|---------------|
|-------------|---------------|-------------|---------------|-------------|---------------|-------------|---------------|-------------|---------------|

Table 4.3

Total Financial Aid as % of Cost of Attendance by Income Level at Missouri S&T, FY08 & FY12

| Income Level | FY08 | | | | | FY12 | | | | |
|-----------------------|------------------------------|----------|------------|-------|-------------|------------------------------|----------|------------|-------|-------------|
| | % COA Met by Source of Aid | | | | % Unmet COA | % COA Met by Source of Aid | | | | % Unmet COA |
| | Expected Family Contribution | Gift Aid | Work Study | Loans | | Expected Family Contribution | Gift Aid | Work Study | Loans | |
| <\$20,000 | 3% | 44% | 2% | 30% | 21% | 2% | 31% | 1% | 36% | 30% |
| \$20,000 to \$40,00 | 15% | 45% | 1% | 21% | 18% | 5% | 35% | 1% | 28% | 31% |
| \$40,000 to \$60,000 | 30% | 35% | 0% | 21% | 14% | 20% | 23% | 0% | 24% | 33% |
| \$60,000 to \$80,000 | 56% | 25% | 0% | 17% | 2% | 38% | 17% | 0% | 22% | 23% |
| \$80,000 to \$100,000 | 70% | 24% | 0% | 11% | 0% | 55% | 16% | 0% | 16% | 13% |
| >\$100,000 | 74% | 24% | 0% | 8% | 0% | 68% | 17% | 0% | 12% | 3% |

Source: UIDS, PeopleSoft
IR&P/LCB 11/12

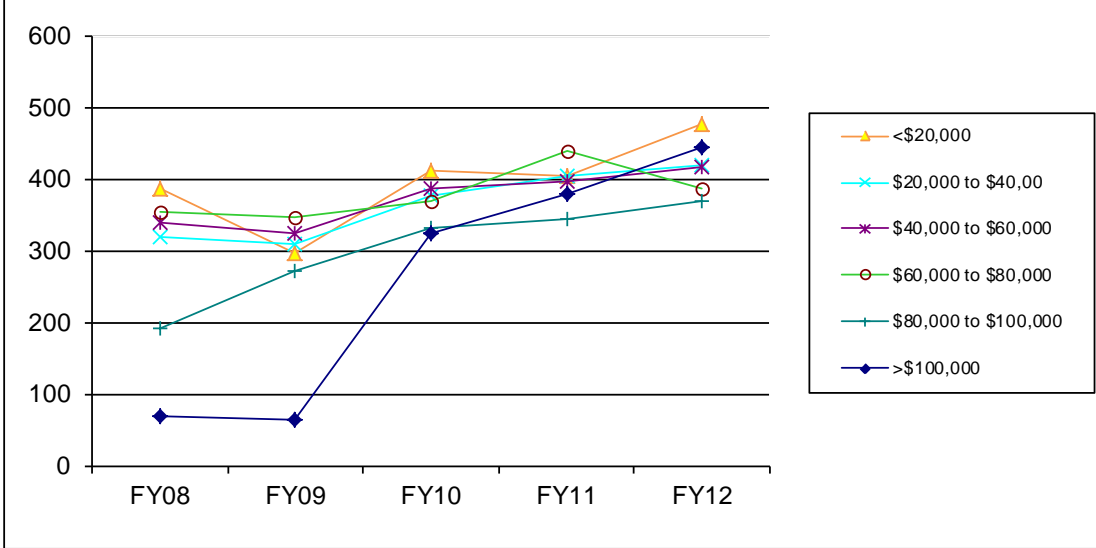
Table 4.4

Average PLUS Loan Awf 0.014 Tc -0.042 Tw 11.5484 0 0 12.8379 92.!

| | FY11 | | FY12 | |
|--------------|------|---------|------|---------|
| | N | Mean | N | Mean |
| With Need | 96 | \$7,529 | 115 | \$6,832 |
| Without Need | 108 | 9,349 | 105 | 9,038 |
| | 204 | \$8,493 | 220 | \$7,885 |

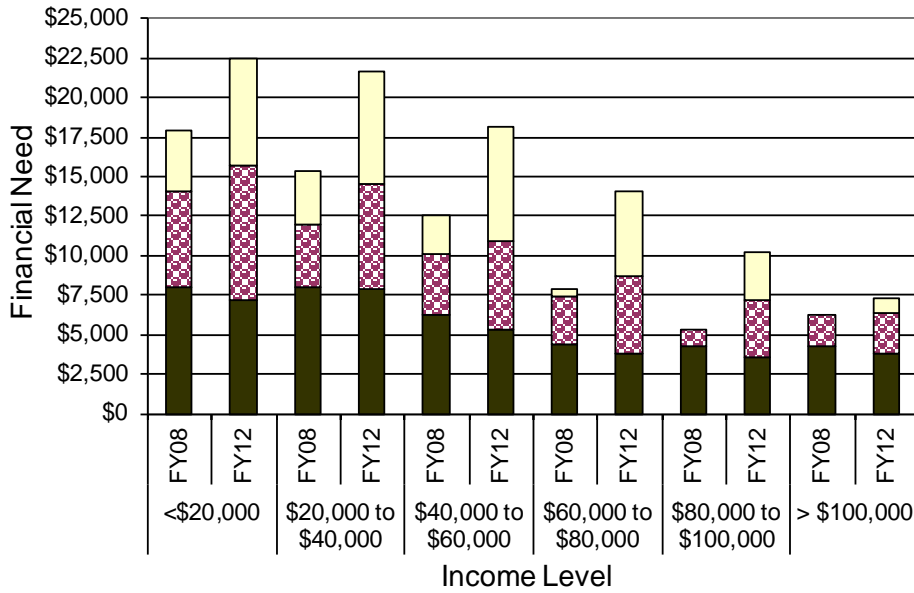
Source: UIDS, PeopleSoft
IR&P/LCB 11/12

Figure 4.3
 Number of Full -time, Degree -Seeking 9 -Month Undergraduate
 Missouri Residents with Financial Need by Income Level at
 Missouri S&T, FY08 - FY12



Source: UIDS, PeopleSoft
 IR&P/LCB 11/12

Figure 4.4
 Distribut42(bu.9/CS0 cs 0 7CS0 3712(4))JTJ ET Q q 94.154 GTJ E 7CS023



Source: UIDS, PeopleSoft
 IR&P/LCB 11/12

Source: UIDS, PeopleSoft
IR&P/LCB 11/12

Table 4.5

FY08 FY09

| | FY08 | FY09 | FY10 | FY11 | FY12 | 5-yr # Change | 5-yr % Change |
|--------------------------------------|------------|------------|------------|------|------|------------------|------------------|
| Completed FAFSA, did not have a need | 442 | 482 | 492 | 492 | 384 | -58 | -13.1% |
| Grant aid, no FAFSA | <u>423</u> | <u>332</u> | <u>265</u> | 265 | | | |

Figure 5.2
 Tuition and Required Fees vs. 9 -Month Cost of Attendance and Grant Aid for Full-



| | FY08 | FY09 | FY10 | FY11 | FY12 | 5-yr # Change | 5-yr % Change |
|-----------------------------|----------|----------|----------|----------|----------|------------------|------------------|
| Budgeted Cost of Attendance | \$22,518 | \$23,435 | \$24,055 | \$24,913 | \$25,303 | \$2,785 | 12.4% |
| Tuition & Required Fees | \$8,264 | \$8,595 | \$8,595 | \$8,631 | \$9,038 | \$774 | 9.4% |
| Average Grant Aid | \$3,642 | \$3,370 | \$3,897 | \$3,922 | \$4,255 | \$613 | 16.8% |

Source: UIDS, IPEDS Institutional Characteristics, PeopleSoft
 IR&P/LCB 11/12

Table 5.1

Average Institutional Grant Awards Distributed to Resident, Full-time, Degree-Seeking

| Students with Need | # of Awards | Average Award | # of Awards | Average Award | FY10 | | FY10 | | FY12 | |
|-----------------------|-------------|---------------|-------------|---------------|-------------|---------------|-------------|---------------|-------------|---------------|
| | | | | | # of Awards | Average Award | # of Awards | Average Award | # of Awards | Average Award |
| Type of Award Need* | 275 | \$3,349 | 198 | \$3,080 | 114 | \$2,678 | 111 | \$2,833 | 450 | \$1,668 |
| Merit | 798 | \$2,561 | 842 | \$2,515 | 907 | \$2,743 | 1,001 | \$2,974 | 1,029 | \$3,843 |
| Other** | 209 | \$1,744 | 301 | \$2,065 | 221 | \$2,399 | 304 | \$1,866 | 277 | \$2,303 |
| Total | 1,282 | \$2,596 | 1,341 | \$2,497 | 1,242 | \$2,676 | 1,416 | \$2,725 | 1,756 | \$3,042 |
| | | | | | | | | | | |
| Students without Need | # of Awards | Average Award | # of Awards | Average Award | FY10 | | FY10 | | FY12 | |
| Type of Award | | | | | # of Awards | Average Award | # of Awards | Average Award | # of Awards | Average Award |
| Merit | 342 | \$2,588 | 358 | \$2,934 | 347 | \$3,170 | 359 | \$3,160 | 330 | \$4,212 |
| Other** | 138 | \$2,635 | 149 | \$2,633 | 113 | \$2,483 | 108 | \$2,774 | 99 | \$3,474 |
| Total | 480 | \$2,602 | 507 | \$2,846 | 460 | \$3,001 | 467 | \$3,070.76 | 429 | \$4,042.15 |

*The amount and type of institutional need-based funding changes each year at UMSL.

**Includes athletic aid and tuition waivers.

Source: UIDS, PeopleSoft

IR&PLCB 11/12

Table 5.3

Total Financial Aid as % of Cost of Attendance by Income Level at the University of Missouri-St. Louis, FY08 & FY12

| Income Level | FY08 | | | | | FY12 | | | | |
|-----------------------|------------------------------|----------|------------|-------|-------------|------------------------------|----------|------------|-------|-------------|
| | % COA Met by Source of Aid | | | | % Unmet COA | % COA Met by Source of Aid | | | | % Unmet COA |
| | Expected Family Contribution | Gift Aid | Work Study | Loans | | Expected Family Contribution | Gift Aid | Work Study | Loans | |
| <\$20,000 | 4% | 22% | 0% | 28% | 46% | 2% | 21% | 0% | 28% | 49% |
| \$20,000 to \$40,00 | 15% | 18% | 0% | 23% | 44% | 8% | 19% | 0% | 22% | 51% |
| \$40,000 to \$60,000 | 28% | 16% | 0% | 21% | 35% | 19% | 17% | 0% | 17% | 47% |
| \$60,000 to \$80,000 | 45% | 13% | 0% | 18% | 24% | 39% | 12% | 0% | 17% | 32% |
| \$80,000 to \$100,000 | 61% | 12% | 0% | 15% | 12% | 60% | 11% | 0% | 15% | 14% |
| >\$100,000 | 66% | 9% | 0% | 15% | 10% | 76% | 8% | 0% | 11% | 5% |

Source: UIDS, PeopleSoft
IR&P/LCB 11/12

Source: UIDS, PeopleSoft
IR&P/LCB 11/12

Source: UIDS, PeopleSoft
IR&P/LCB 11/12

Table 5.5

| | FY08 | FY09 | FY10 | FY11 | FY12 | FY08 | FY09 | FY10 | FY11 | FY12 | # Change | % Change |
|------------------------------------|------------|------------|------------|------------|------------|--------|--------|------|------|------|-----------|-----------|
| | | | | | | | | | | | FY08-FY12 | FY08-FY12 |
| Total Enrolled for 9 months (N) | 954 | 828 | 938 | 1,029 | 1,091 | | | | | | 137 | 14% |
| Cost of Attendance | \$23,467 | \$24,095 | \$24,863 | \$25,832 | \$26,148 | | | | | | \$2,681 | 11% |
| Less Expected Family Contribution* | <u>901</u> | <u>862</u> | <u>654</u> | <u>544</u> | <u>488</u> | 4% | 4% | 3% | 2% | 2% | -413 | -46% |
| Financial Need | 22,567 | 23,233 | 24,209 | 25,288 | 25,660 | 96% | 96% | 97% | 98% | 98% | 3,094 | 14% |
| Less Grant Aid | 5,247 | 4,763 | 5,327 | 5,210 | 5,609 | 25,288 | 25,660 | | | | | |

Table 5.5 (Continued)

| | FY08 | FY09 | FY10 | FY11 | FY12 | FY08 | FY09 | FY10 | FY11 | FY12 | # Change FY08-FY12 | % Change FY08-FY12 |
|-------------------------------------|--------------|---------------|---------------|--------------|--------------|------|------|------|------|------|-----------------------|-----------------------|
| Total Enrolled for 9 months (N) | 352 | 230 | 271 | 261 | 266 | | | | | | -86 | -24% |
| Cost of Attendance | \$21,664 | \$22,836 | \$23,498 | \$24,026 | \$24,353 | | | | | | \$2,690 | 12% |
| Less Expected Family Contribution* | <u>9,732</u> | <u>10,820</u> | <u>10,373</u> | <u>9,264</u> | <u>9,455</u> | 45% | 47% | 44% | 39% | 39% | -277 | -3% |
| Financial Need | 11,931 | 12,016 | 13,125 | 14,762 | 14,898 | 55% | 53% | 56% | 61% | 61% | 2,967 | 25% |
| Less Grant Aid | 2,817 | 2,440 | 2,417 | 2,590 | 2,849 | 13% | 11% | 10% | 11% | 12% | 31 | 1% |
| Unmet Need | \$9,114 | \$9,576 | \$10,707 | \$12,172 | \$12,049 | 42% | 42% | 46% | 51% | 49% | 2,935 | 32% |
| % Grant Aid that Met Financial Need | 24% | 20% | 18% | 18% | 19% | | | | | | | |
| Non-Grant Sources to Meet | | | | | | | | | | | | |
| Remaining Unmet Financial Need | | | | | | | | | | | | |
| College Work Study | \$12 | \$0 | \$15 | \$33 | \$21 | 0% | 0% | 0% | 0% | 0% | 9 | 73% |
| Need-based Loans | 3,521 | 3,320 | 3,476 | 3,764 | 3,541 | 16% | 15% | 15% | 16% | 15% | 20 | 1% |
| Non-Need Based Loans | 389 | 102 | 602 | 401 | 435 | 2% | 0% | 3% | 2% | 2% | 46 | 12% |

RTJ 4-Q-69.7591a27(nanc27(nancg1oAn76))TJ)Tj 4.al .4G5%5%64.615 /(5%)To51%nancg18 Tw 19.462 0 To \$12,861