

**ENROLLMENT SUMMARY REPORT
FALL 2014**

Dr. La Shonda Carter-Boone
Senior Institutional Research Analyst

Office of Institutional Research & Planning
714 Lewis Hall
University of Missouri System

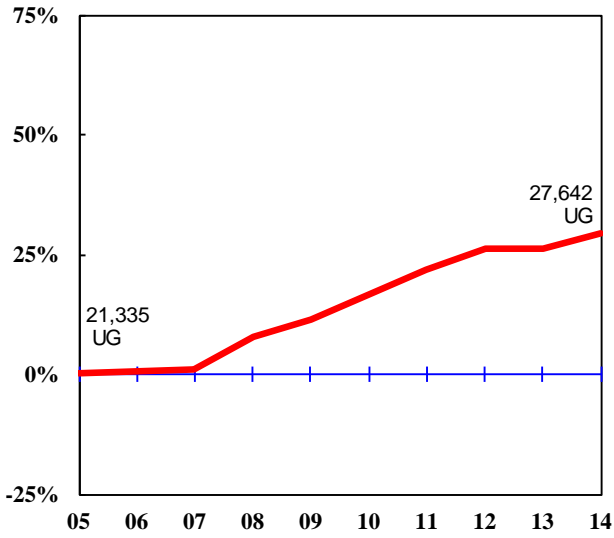
November 2014

IR&P 2014, Report 5

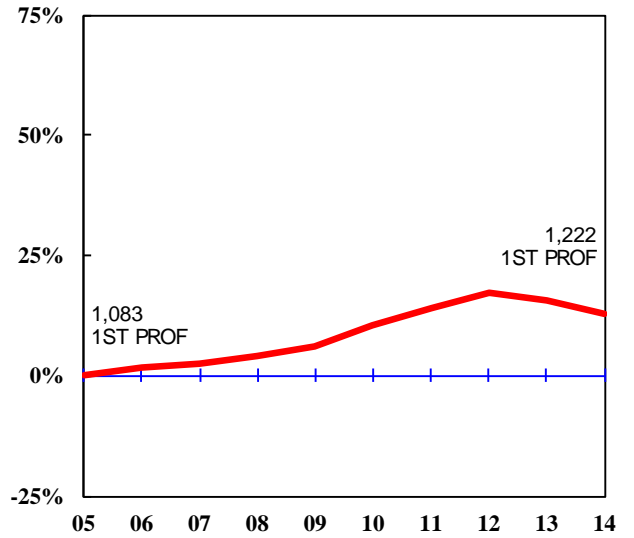
-1.163 TD CS111.04 04 3-0 0 14

UNIVERSITY OF MISSOURI-COLUMBIA

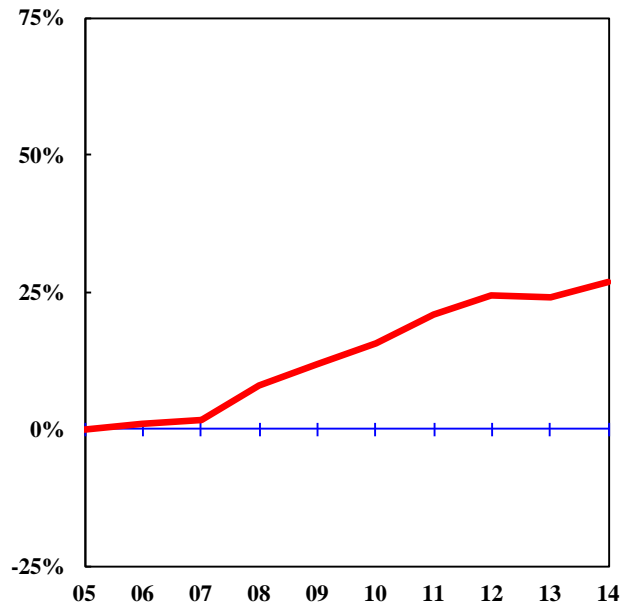
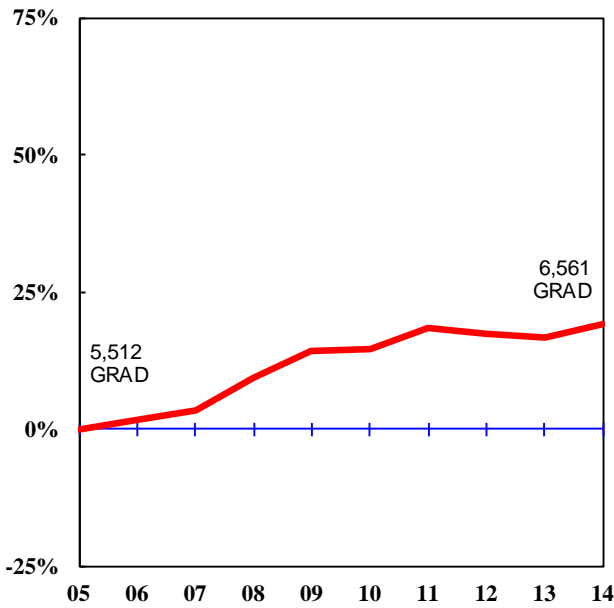
UNDERGRADUATES



FIRST PROFESSIONALS



GRADUATES



**Figure 1: Rate of Change in Fall Headcount by Student Level and Campus,
Fall 2005 to Fall 2014 (Continued)**

UNIVERSITY OF MISSOURI-ST. LOUIS

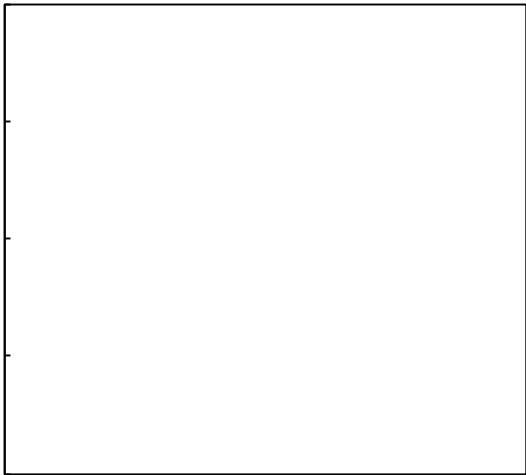
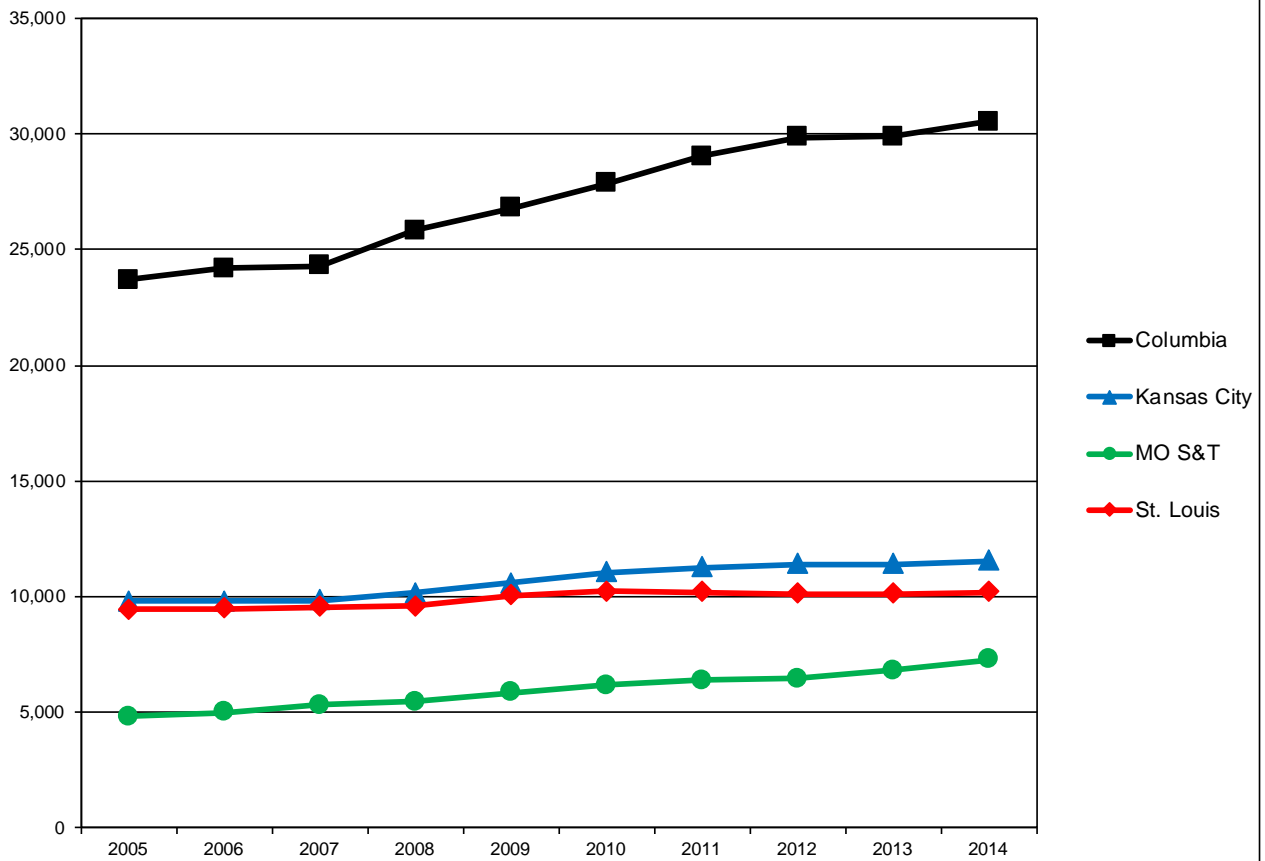


Table 1. Headcount History by Student Level and Campus, Fall 2005 to Fall 2014

| Campus | Level | 2005 | 2006 | 2007 | 2008 | 2009 | 2010 | 2011 | 2012 | 2013 | 2014 | 10-yr. Change |
|---------------|---------------|-------------|-------------|-------------|-------------|-------------|-------------|-------------|-------------|-------------|-------------|--------------------------|
| Columbia | Undergraduate | 21,335 | 21,484 | 21,586 | 22,980 | 23,799 | 24,834 | 25,992 | 26,960 | 26,928 | 27,642 | 30% |
| | Professional | 1,083 | 1,102 | 1,111 | 1,126 | 1,150 | 1,197 | 1,236 | 1,271 | 1,254 | 1,222 | 13% |
| | Graduate | 5,512 | 5,598 | 5,708 | 6,024 | 6,288 | 6,310 | 6,534 | 6,473 | 6,434 | 6,561 | 19% |
| | Total | 27,930 | 28,184 | 28,405 | 30,130 | 31,237 | 32,341 | 33,762 | 34,704 | 34,616 | 35,425 | 27% |
| Kansas City | Undergraduate | 9,487 | 9,383 | 9,094 | 9,261 | 9,381 | 9,850 | 10,122 | 10,614 | 10,227 | 10,453 | 10% |
| | Professional | 1,523 | 1,509 | 1,548 | 1,569 | 1,623 | 1,638 | 1,659 | 1,725 | 1,753 | 1,782 | 17% |
| | Graduate | 3,296 | 3,321 | 3,800 | 3,651 | 3,795 | 3,771 | 3,692 | 3,651 | 3,738 | 3,911 | 19% |
| | Total* | 14,306 | 14,213 | 14,442 | 14,481 | 14,799 | 15,259 | 15,473 | 15,990 | 15,718 | 16,146 | 13% |
| MO S&T | Undergraduate | 4,311 | 4,515 | 4,752 | 4,911 | 5,206 | 5,503 | 5,671 | 5,841 | 6,145 | 6,520 | 51% |
| | Graduate | 1,289 | 1,343 | 1,414 | 1,456 | 1,608 | 1,702 | 1,850 | 1,804 | 1,984 | 2,120 | <u>64%</u> |
| | Total | 5,600 | 5,858 | 6,166 | 6,367 | 6,814 | 7,205 | 7,521 | 7,645 | 8,129 | 8,640 | 54% |
| St. Louis | Undergraduate | 12,606 | 12,459 | 12,432 | 12,358 | 12,966 | 13,171 | 13,151 | 13,335 | 13,569 | 13,874 | 10% |
| | Professional | 164 | 173 | 171 | 178 | 179 | 171 | 172 | 168 | 172 | 176 | 7% |
| | Graduate | 2,778 | 2,896 | 2,924 | 3,205 | 3,389 | 3,449 | 3,486 | 3,202 | 3,068 | 3,022 | 9% |
| | Total* | 15,548 | 15,528 | 15,527 | 15,741 | 16,534 | 16,791 | 16,809 | 16,705 | 16,809 | 17,072 | |

Figure 2. Full-time Equivalence History by Campus, 2005 to 2014



Source: EMSAS Fall Enrollment file
IR&P/LCB 10/23/14

Full-time Equivalent History by Campus, 2005 to 2014

| Campus | 2005 | 2006 | 2007 | 2008 | 2009 | 2010 | 2011 | 2012 | 2013 | 2014 |
|--------------|-----------------|-----------------|-----------------|-----------------|-----------------|-----------------|-----------------|-----------------|-----------------|-----------------|
| Columbia | 23,703.6 | 24,182.7 | 24,280.4 | 25,840.2 | 26,797.4 | 27,838.4 | 29,020.4 | 29,845.0 | 29,874.8 | 30,531.5 |
| Kansas City | 9,795.3 | 9,797.9 | 9,843.8 | 10,152.4 | 10,597.5 | 11,042.8 | 11,255.7 | 11,387.0 | 11,391.3 | 11,551.9 |
| MO S&T | 4,799.9 | 4,982.6 | 5,323.0 | 5,452.9 | 5,860.4 | 6,162.2 | 6,376.5 | 6,453.0 | 6,793.5 | 7,278.4 |
| St. Louis | 9,451.9 | 9,467.5 | 9,546.9 | 9,578.5 | 10,031.8 | 10,227.7 | 10,188.8 | 10,121.0 | 10,101.9 | 10,203.1 |
| Total | 47,750.7 | 48,430.7 | 48,994.0 | 51,023.9 | 53,287.1 | 55,271.1 | 56,841.4 | 57,806.0 | 58,161.5 | 59,565.0 |

(Totals may not add due to rounding.)

Table 2.2 Headcounts, Full-time Equivalence, and Student Credit Hours by Location, Fall 2010 to Fall 2014

Table 2.3 Headcounts, Full-time Equivalence, and Student Credit Hours by Location, Fall 2010 to Fall 2014

| | <u>On-Campus</u> | | | | | <u>Off-Campus</u> | | | | | <u>Total</u> | | | | | 5-yr. Change |
|---|------------------|----------------|----------------|----------------|-----------------|-------------------|----------------|----------------|----------------|----------------|-----------------|-----------------|-----------------|-----------------|-----------------|-----------------|
| | FS10 | FS11 | FS12 | FS13 | FS14 | FS10 | FS11 | FS12 | FS13 | FS14 | FS10 | FS11 | FS12 | FS13 | FS14 | |
| Headcount by Student Level | | | | | | | | | | | | | | | | |
| Undergraduate | | | | | | | | | | | | | | | | |
| Fresh & Soph DS | 2,347 | 2,298 | 2,325 | 2,398 | 2,553 | 42 | 29 | 25 | 13 | 43 | 2,389 | 2,327 | 2,350 | 2,411 | 2,596 | 9% |
| Junior & Senior DS | 2,994 | 3,154 | 3,285 | 3,502 | 3,628 | 74 | 123 | 117 | 151 | 194 | 3,068 | 3,277 | 3,402 | 3,653 | 3,822 | 25% |
| Nondegree | <u>39</u> | <u>48</u> | <u>84</u> | <u>77</u> | <u>100</u> | <u>7</u> | <u>19</u> | <u>5</u> | <u>4</u> | <u>2</u> | <u>46</u> | <u>67</u> | <u>89</u> | <u>81</u> | <u>102</u> | <u>122%</u> |
| Total Undergraduate | 5,380 | 5,500 | 5,694 | 5,977 | 6,281 | 123 | 171 | 147 | 168 | 239 | 5,503 | 5,671 | 5,841 | 6,145 | 6,520 | 18% |
| Graduate | | | | | | | | | | | | | | | | |
| Masters & Ed. Spec. | 686 | 651 | 567 | 640 | 743 | 530 | 659 | 690 | 774 | 781 | 1,216 | 1,310 | 1,257 | 1,414 | 1,524 | 25% |
| Doctoral | 440 | 504 | 494 | 522 | 548 | 26 | 24 | 23 | 33 | 35 | 466 | 528 | 517 | 555 | 583 | 25% |
| Nondegree | <u>13</u> | <u>3</u> | <u>4</u> | <u>3</u> | <u>2</u> | <u>7</u> | <u>9</u> | <u>26</u> | <u>12</u> | <u>11</u> | <u>20</u> | <u>12</u> | <u>30</u> | <u>15</u> | <u>13</u> | <u>-35%</u> |
| Total Graduate | 1,139 | 1,158 | 1,065 | 1,165 | 1,293 | 563 | 692 | 739 | 819 | 827 | 1,702 | 1,850 | 1,804 | 1,984 | 2,120 | 25% |
| Grand Total Headcount | 6,519 | 6,658 | 6,759 | 7,142 | 7,574 | 686 | 863 | 886 | 987 | 1,066 | 7,205 | 7,521 | 7,645 | 8,129 | 8,640 | 20% |
| FTE Enrollments by Student Level | | | | | | | | | | | | | | | | |
| Undergraduate | 5,068.1 | 5,139.7 | 5,267.5 | 5,459.0 | 5,800.2 | 58.4 | 96.1 | 84.1 | 100.4 | 146.5 | 5,126.5 | 5,235.8 | 5,351.6 | 5,559.4 | 5,946.8 | 16% |
| Graduate | <u>796.9</u> | <u>809.0</u> | <u>727.1</u> | <u>819.9</u> | <u>917.0</u> | <u>238.8</u> | <u>331.6</u> | <u>374.2</u> | <u>414.3</u> | <u>414.7</u> | <u>1,035.7</u> | <u>1,140.6</u> | <u>1,101.3</u> | <u>1,234.2</u> | <u>1,331.7</u> | <u>29%</u> |
| Total FTE | 5,865.0 | 5,948.7 | 5,994.5 | 6,278.9 | 6,717.2 | 297.2 | 427.7 | 458.3 | 514.7 | 561.2 | 6,162.2 | 6,376.5 | 6,452.9 | 6,793.5 | 7,278.4 | 18% |
| SCH Produced by Student Level | | | | | | | | | | | | | | | | |
| Undergraduate | 76,021.0 | 77,095.5 | 79,012.0 | 81,884.5 | 87,003.5 | 876.0 | 1,442.0 | 1,262.0 | 1,506.0 | 2,198.0 | 76,897.0 | 78,537.5 | 80,274.0 | 83,390.5 | 89,201.5 | 16% |
| Graduate | <u>9,562.5</u> | <u>9,708.5</u> | <u>8,725.0</u> | <u>9,839.0</u> | <u>11,004.0</u> | <u>2,866.0</u> | <u>3,979.0</u> | <u>4,490.5</u> | <u>4,971.0</u> | <u>4,976.0</u> | <u>12,428.5</u> | <u>13,687.5</u> | <u>13,215.5</u> | <u>14,810.0</u> | <u>15,980.0</u> | <u>29%</u> |
| Total SCH | 85,583.5 | 86,804.0 | 87,737.0 | 91,723.5 | 98,007.5 | 3,742.0 | 5,421.0 | 5,752.5 | 6,477.0 | 7,174.0 | 89,325.5 | 92,225.0 | 93,489.5 | 98,200.5 | 105,181.5 | 18% |

Source: EMSAS Fall Enrollment file

Table 2.4 Headcounts, Full-time Equivalence, and Student Credit Hours by Location, Fall 2010 to Fall 2014

| Headcount by Student Level | FS10 | FS11 | FS12 | FS13 | FS14 | FS10 | FS11 | FS12 | FS13 | FS14 | FS10 | FS11 | FS12 | FS13 | FS14 | 5-yr. Change |
|----------------------------|------|------|------|------|------|------|------|------|------|------|------|------|------|------|------|-----------------|
|----------------------------|------|------|------|------|------|------|------|------|------|------|------|------|------|------|------|-----------------|

On-Campus First-time College History, 2005 to 2014

| Campus | 2005 | 2006 | 2007 | 2008 | 2009 | 2010 | 2011 | 2012 | 2013 | 2014 |
|---------------|--------------|--------------|--------------|--------------|--------------|--------------|--------------|--------------|--------------|--------------|
| Columbia | 4,720 | 4,842 | 4,981 | 5,780 | 5,589 | 6,087 | 6,137 | 6,498 | 6,187 | 6,514 |
| Kansas City | 1,048 | 959 | 959 | 1,008 | 1,007 | 1,147 | 1,161 | 1,125 | 1,078 | 1,074 |
| MO S&T | 892 | 977 | 1,050 | 1,055 | 1,132 | 1,170 | 1,101 | 1,125 | 1,263 | 1,291 |
| St. Louis | 536 | 530 | 502 | 468 | 527 | 502 | 508 | 547 | 500 | 531 |
| Total | 7,196 | 7,308 | 7,492 | 8,311 | 8,255 | 8,906 | 8,907 | 9,295 | 9,028 | 9,410 |

On-Campus New Graduate Student History by Campus, 2005 to 2014

| Campus | 2005 | 2006 | 2007 | 2008 | 2009 | 2010 | 2011 | 2012 | 2013 | 2014 |
|---------------|--------------|--------------|--------------|--------------|--------------|--------------|--------------|--------------|--------------|--------------|
| Columbia | 939 | 1,046 | 1,266 | 1,274 | 1,272 | 1,367 | 1,452 | 1,346 | 1,342 | 1,361 |
| Kansas City | 882 | 826 | 973 | 1,005 | 1,005 | 1,076 | 922 | 963 | 1,061 | 1,121 |
| MO S&T | 228 | 251 | 250 | 245 | 290 | 305 | 248 | 219 | 316 | 254 |
| St. Louis | 603 | 674 | 652 | 736 | 792 | 775 | 720 | 648 | 686 | 610 |
| Total | 2,652 | 2,797 | 3,141 | 3,260 | 3,359 | 3,523 | 3,342 | 3,176 | 3,405 | 3,346 |

On-Campus New First Professional Student History By Campus, 2005 to 2014

| Campus | 2005 | 2006 | 2007 | 2008 | 2009 | 2010 | 2011 | 2012 | 2013 | 2014 |
|---------------|-------------|-------------|-------------|-------------|-------------|-------------|-------------|-------------|-------------|-------------|
| Columbia | 329 | 338 | 328 | 334 | 368 | 376 | 373 | 353 | 334 | 339 |
| Kansas City | 361 | 361 | 465 | 449 | 485 | 500 | 481 | 494 | 487 | 513 |
| St. Louis | 44 | 45 | 45 | 48 | 44 | 38 | 46 | 46 | 45 | 44 |
| Total | 734 | 744 | 838 | 831 | 897 | 914 | 900 | 893 | 866 | 896 |

) L U V W W L P H 2 Q & D P S X V 8 Q G H U J U D G X D W H 7 U D Q V I H U 6 W

| Campus | 2005 | 2006 | 2007 | 2008 | 2009 | 2010 | 2011 | 2012 | 2013 | 2014 |
|---------------|-------------|-------------|-------------|-------------|-------------|-------------|-------------|-------------|-------------|-------------|
| Columbia | 1,281 | 1,108 | 1,116 | 1,230 | 1,265 | 1,282 | 1,294 | 1,253 | 1,082 | 1,151 |
| Kansas City | 1,443 | 1,343 | 1,214 | 1,238 | 1,450 | 1,556 | 1,462 | 1,459 | 1,358 | 1,245 |

| Level | 2010 | 2011 | 2012 | 2013 | 2014 | 5 yr. Change |
|---|-------------|-------------|-------------|-------------|-------------|---------------------|
| Undergraduate | | | | | | |
| Freshman & Soph DS | 14,609 | 14,856 | 14,641 | 13,845 | 13,753 | -6% |
| Junior & Senior DS | 18,223 | 18,419 | 18,715 | 19,092 | 19,303 | 6% |
| Nondegree | 151 | 157 | 160 | 206 | 199 | 32% |
| Total System Full-time Resident Undergraduate | 32,983 | 33,432 | 33,516 | 33,143 | 33,255 | 1% |
| First Professional | | | | | | |

Table 4.0b Non-Resident Headcount History by Student Level, Load, and Campus, Fall 2010 to Fall 2014
 5 yr.

| Level | 2010 | 2011 | 2012 | 2013 | 2014 | Change |
|---------------|---------|---------|---------|---------|---------|--------|
| Undergraduate | | | | | | |
| Fresno | 69,133 | 73,004 | 73,004 | 73,004 | 73,004 | 3,871 |
| San Joaquin | 112,513 | 113,000 | 113,000 | 113,000 | 113,000 | 487 |
| Total | 181,646 | 186,004 | 186,004 | 186,004 | 186,004 | 4,358 |

Table 4.1a Resident Headcount History by Student Level, Load, and Campus, Fall 2010 to Fall 2014

| Level | 2010 | 2011 | 2012 | 2013 | 2014 | 5 yr. Change |
|---|-------------|-------------|-------------|-------------|-------------|---------------------|
| UNIVERSITY OF MISSOURI-COLUMBIA FULL-TIME RESIDENT HEADCOUNT | | | | | | |
| Undergraduate | | | | | | |
| Freshman & Soph DS | 9,137 | 9,315 | 9,191 | 8,640 | 8,561 | -6% |
| Junior & Senior DS | 9,675 | 9,922 | 10,046 | 10,152 | 10,132 | 5% |
| Nondegree | 1 | 2 | 3 | 2 | 7 | 600% |
| Total MU Full-time Resident Undergraduate | 18,813 | 19,239 | 19,240 | 18,794 | 18,700 | -1% |
| First Professional | | | | | | |
| Law (JD) | 398 | 402 | 367 | 339 | 304 | -24% |
| Medicine (MD) | 372 | 377 | 384 | 364 | 372 | 0% |
| Vet. Med (DVM) | 301 | 344 | 386 | 384 | 364 | 21% |
| Total MU Full-time Resident 1st Professional | 1,071 | 1,123 | 1,137 | 1,087 | 1,040 | -3% |
| Graduate | | | | | | |
| Masters & Ed. Spec. | 1,157 | 1,133 | 1,112 | 1,072 | 1,050 | -9% |
| Doctoral | 761 | 750 | 791 | 712 | 754 | -1% |
| Nondegree | 26 | 23 | 26 | 11 | 18 | -31% |
| Total MU Full-time Resident Graduate | 1,944 | 1,906 | 1,929 | 1,795 | 1,822 | -6% |
| Total MU Full-time Resident Headcount | 21,828 | 22,268 | 22,306 | 21,676 | 21,562 | -1% |
| UNIVERSITY OF MISSOURI-COLUMBIA PART-TIME RESIDENT HEADCOUNT | | | | | | |
| Undergraduate | | | | | | |
| Freshman & Soph DS | 229 | 266 | 245 | 231 | 220 | -4% |
| Junior & Senior DS | 843 | 885 | 988 | 882 | 987 | 17% |
| Nondegree | 139 | 153 | 199 | 207 | 178 | 28% |
| Total MU Part-time Resident Undergraduate | 1,211 | 1,304 | 1,432 | 1,320 | 1,385 | 14% |
| First Professional | | | | | | |
| Law (JD) | 14 | 11 | 20 | 28 | 18 | 29% |
| Medicine (MD) | 0 | 0 | 0 | 0 | 0 | |
| Vet. Med (DVM) | 0 | 0 | 0 | 0 | 0 | |
| Total MU Part-time Resident 1st Professional | 14 | 11 | 20 | 28 | 18 | 29% |
| Graduate | | | | | | |
| Masters & Ed. Spec. | 1,100 | 1,116 | 1,043 | 999 | 1,035 | -6% |
| Doctoral | 318 | 416 | 368 | 453 | 387 | 22% |
| Nondegree | 357 | 345 | 337 | 225 | 183 | -49% |
| Total MU Part-time Resident Graduate | 1,775 | 1,877 | 1,748 | 1,677 | 1,605 | -10% |
| Total MU Part-time Resident Headcount | 3,000 | 3,192 | 3,200 | 3,025 | 3,008 | 0% |
| UNIVERSITY OF MISSOURI-COLUMBIA TOTAL RESIDENT HEADCOUNT | | | | | | |
| Undergraduate | | | | | | |
| Freshman & Soph DS | 9,366 | 9,581 | 9,436 | 8,871 | 8,781 | -6% |
| Junior & Senior DS | 10,518 | 10,807 | 11,034 | 11,034 | 11,119 | 6% |
| Nondegree | 140 | 155 | 202 | 209 | 185 | 32% |
| Total MU Resident Undergraduate | 20,024 | 20,543 | 20,672 | 20,114 | 20,085 | 0% |
| First Professional | | | | | | |
| Law (JD) | 412 | 413 | 387 | 367 | 322 | -22% |
| Medicine (MD) | 372 | 377 | 384 | 364 | 372 | 0% |
| Vet. Med (DVM) | 301 | 344 | 386 | 384 | 364 | 21% |
| Total MU Resident 1st Professional | 1,085 | 1,134 | 1,157 | 1,115 | 1,058 | -2% |
| Graduate | | | | | | |
| Masters & Ed. Spec. | 2,257 | 2,249 | 2,155 | 2,071 | 2,085 | -8% |
| Doctoral | 1,079 | 1,166 | 1,159 | 1,165 | 1,141 | 6% |
| Nondegree | 383 | 368 | 363 | 236 | 201 | -48% |
| Total MU Resident Graduate | 3,719 | 3,783 | 3,677 | 3,472 | 3,427 | -8% |
| Grand Total MU Resident Headcount | 24,828 | 25,460 | 25,506 | 24,701 | 24,570 | -1% |

Table 4.1b Non-Resident Headcount History by Student Level, Load, and Campus, Fall 2010 to Fall 2014

| Level | 2010 | 2011 | 2012 | 2013 | 2014 | 5 yr. Change |
|--|-------------|-------------|-------------|-------------|-------------|---------------------|
| Undergraduate | | | | | | |
| Freshman & Soph DS | 3,137 | 3,417 | 3,923 | 4,380 | 4,939 | 57% |
| Junior & Senior DS | 1,420 | 1,644 | 1,886 | 1,996 | 2,121 | 49% |
| Nondegree | 53 | 113 | 129 | 88 | 99 | 87% |
| Total MU Full-time Non-Resident Undergraduate | 4,610 | 5,174 | 5,938 | 6,464 | 7,159 | 55% |
| First Professional | | | | | | |
| Law (JD) | 30 | 18 | 27 | 26 | 44 | 47% |
| Medicine (MD) | 16 | 15 | 18 | 32 | 24 | 50% |
| Vet. Med (DVM) | 65 | 69 | 67 | 78 | 94 | 45% |
| Total MU Full-time Non-Resident 1st Professional | 111 | 102 | 112 | 136 | 162 | 46% |
| Graduate | | | | | | |
| Masters & Ed. Spec. | 674 | 797 | 849 | 903 | 877 | 30% |
| Doctoral | 999 | 1,067 | 1,073 | 1,114 | 1,157 | 16% |
| Nondegree | 20 | 24 | 26 | 25 | 45 | 125% |
| Total MU Full-time Non-Resident Graduate | 1,693 | 1,888 | 1,948 | 2,042 | 2,079 | 23% |
| Total MU Full-time Non-Resident Headcount | 6,414 | 7,164 | 7,998 | 8,642 | 9,400 | 47% |
| | | | | | | |
| Undergraduate | | | | | | |
| Freshman & Soph DS | 66 | 114 | 143 | 166 | 153 | 132% |
| Junior & Senior DS | 95 | 123 | 167 | 138 | 163 | 72% |
| Nondegree | 39 | 38 | 40 | 46 | 82 | 110% |
| Total MU Part-time Non-Resident Undergraduate | 200 | 275 | 350 | 350 | 398 | 99% |
| First Professional | | | | | | |
| Law (JD) | 1 | 0 | 2 | 3 | 2 | |
| Medicine (MD) | 0 | 0 | 0 | 0 | 0 | |
| Vet. Med (DVM) | 0 | 0 | 0 | 0 | 0 | |
| Total MU Part-time Non-Resident 1st Professional | 1 | 0 | 2 | 3 | 2 | |
| Graduate | | | | | | |
| Masters & Ed. Spec. | 546 | 488 | 477 | 537 | 637 | 17% |
| Doctoral | 247 | 282 | 297 | 310 | 326 | 32% |
| Nondegree | 105 | 93 | 74 | 73 | 92 | -12% |
| Total MU Part-time Non-Resident Graduate | 898 | 863 | 848 | 920 | 1,055 | 17% |
| Total MU Part-time Non-Resident Headcount | 1,099 | 1,138 | 1,200 | 1,273 | 1,455 | 32% |
| | | | | | | |
| Undergraduate | | | | | | |
| Freshman & Soph DS | 3,203 | 3,531 | 4,066 | 4,546 | 5,092 | 59% |
| Junior & Senior DS | 1,515 | 1,767 | 2,053 | 2,134 | 2,568 | 69% |

Table 4.2a Resident Headcount History by Student Level, Load, and Campus, Fall 2010 to Fall 2014

| Level | 2010 | 2011 | 2012 | 2013 | 2014 | 5 yr. Change |
|--|-------------|-------------|-------------|-------------|-------------|---------------------|
| Undergraduate | | | | | | |
| Freshman & Soph DS | 2,125 | 2,183 | 2,241 | 2,041 | 1,901 | -11% |
| Junior & Senior DS | 2,668 | 2,631 | 2,563 | 2,668 | 2,718 | 2% |
| Nondegree | 11 | 7 | 8 | 10 | 11 | 0% |
| Total UMKC Full-time Resident Undergraduate | 4,804 | 4,821 | 4,812 | 4,719 | 4,630 | -4% |
| First Professional | | | | | | |
| Dentistry (DDS) | 298 | 308 | 308 | 307 | 295 | -1% |
| Law (JD) | 357 | 330 | 325 | 309 | 309 | -13% |
| Medicine (MD) | 261 | 267 | 272 | 269 | 275 | 5% |
| Pharmacy (Dpharm) | 327 | 335 | 390 | 394 | 396 | 21% |
| Total UMKC Full-time Resident 1st Professional | 1,243 | 1,240 | 1,295 | 1,279 | 1,275 | 3% |
| Graduate | | | | | | |
| Masters & Ed. Spec. | 534 | 522 | 452 | 456 | 431 | -19% |
| Doctoral | 51 | 53 | 50 | 64 | 94 | 84% |
| Nondegree | 1 | 0 | 4 | 4 | 1 | 0% |
| Total UMKC Full-time Resident Graduate | 586 | 575 | 506 | 524 | 526 | -10% |
| Total UMKC Full-time Resident Headcount | 6,633 | 6,636 | 6,613 | 6,522 | 6,431 | -3% |
| Undergraduate | | | | | | |
| Freshman & Soph DS | 269 | 305 | 303 | 268 | 200 | -26% |
| Junior & Senior DS | 808 | 895 | 882 | 826 | 832 | 3% |
| Nondegree | 1,483 | 1,495 | 1,974 | 1,699 | 2,024 | 36% |
| Total UMKC Part-time Resident Undergraduate | 2,560 | 2,695 | 3,159 | 2,793 | 3,056 | 19% |
| First Professional | | | | | | |
| Law (JD) | 21 | 24 | 20 | 25 | 23 | 10% |
| Medicine (MD) | 0 | 0 | 0 | 0 | 0 | |
| Total UMKC Part-time Resident 1st Professional | 21 | 24 | 20 | 25 | 23 | 10% |

Table 4.2b Non-Resident Headcount History by Student Level, Load, and Campus, Fall 2010 to Fall 2014

| Level | 2010 | 2011 | 2012 | 2013 | 2014 | 5 yr. Change |
|---|-------------|-------------|-------------|-------------|-------------|---------------------|
| Undergraduate | | | | | | |
| Freshman & Soph DS | 753 | 747 | 835 | 817 | 792 | 5% |
| Junior & Senior DS | 1,117 | 1,202 | 1,153 | 1,173 | 1,195 | 7% |
| Nondegree | 70 | 80 | 94 | 104 | 200 | 186% |
| Total UMKC Full-time Non-Resident Undergraduate | 1,940 | 2,029 | 2,082 | 2,094 | 2,187 | 13% |
| First Professional | | | | | | |
| Dentistry (DDS) | 107 | 112 | 117 | 118 | 117 | |

Table 4.3a Resident Headcount History by Student Level, Load, and Campus, Fall 2010 to Fall 2014

| Level | 2010 | 2011 | 2012 | 2013 | 2014 | 5 yr. Change |
|--------------|-------------|-------------|-------------|-------------|-------------|---------------------|
|--------------|-------------|-------------|-------------|-------------|-------------|---------------------|

| | | | | | | |
|---------------|--|--|--|--|--|--|
| Undergraduate | | | | | | |
|---------------|--|--|--|--|--|--|

Table 4.4b Non-Resident Headcount History by Student Level, Load, and Campus, Fall 2010 to Fall 2014

| Level | 2010 | 2011 | 2012 | 2013 | 2014 | 5 yr. Change |
|--|-------------|-------------|-------------|-------------|-------------|---------------------|
| Undergraduate | | | | | | |
| Freshman & Soph DS | 274 | 306 | 335 | 308 | 304 | 11% |
| Junior & Senior DS | 396 | 391 | 388 | 427 | 438 | 11% |
| Nondegree | 40 | 39 | 36 | 43 | 49 | 23% |
| Total UMSL Full-time Non-Resident Undergraduate | 710 | 736 | 759 | 778 | 791 | 11% |
| First Professional | | | | | | |
| Optometry (OD) | 97 | 107 | 108 | 108 | 106 | 9% |
| Total UMSL Full-time Non-Resident 1st Professional | 97 | 107 | 108 | 108 | 106 | 9% |
| Graduate | | | | | | |
| Masters & Ed. Spec. | 165 | 143 | 170 | 166 | 142 | -14% |
| Doctoral | 146 | 137 | 117 | 122 | 124 | -15% |
| Nondegree | 12 | 6 | 5 | 5 | 11 | -8% |
| Total UMSL Full-time Non-Resident Graduate | 323 | 286 | 292 | 293 | 277 | -14% |
| Total UMSL Full-time Non-Resident Headcount | 1,130 | 1,129 | 1,159 | 1,179 | 1,174 | 4% |
| Undergraduate | | | | | | |
| Freshman & Soph DS | 26 | 27 | 30 | 20 | 15 | -42% |
| Junior & Senior DS | 141 | 139 | 159 | 171 | 163 | 16% |
| Nondegree | 29 | 37 | 28 | 24 | 36 | 24% |
| Total UMSL Part-time Non-Resident Undergraduate | 196 | 203 | 217 | 215 | 214 | 9% |
| First Professional | | | | | | |
| Optometry (OD) | 0 | 0 | 0 | 0 | 0 | - |
| Total UMSL Part-time Non-Resident 1st Professional | 0 | 0 | 0 | 0 | 0 | - |

Table 5. Headcount Students by Gender and Ethnicity, Fall 2014

| Data - Classification | HC | % | HC | % | HC | % | HC | % | HC | % |
|------------------------------|--------------|----------|--------------|----------|--------------|----------|------------|----------|--------------|----------|
| A. Gender | | | | | | | | | | |
| Men | | | | | | | | | | |
| First-time DS College | 3,065 | 47% | 436 | 41% | 1005 | 78% | 203 | 40% | 4,709 | 50% |
| Other Undergraduate | 10,199 | 48% | 4,038 | 43% | 3,987 | 76% | 5,605 | 42% | 23,829 | 49% |
| First Professional | 534 | 44% | 896 | 50% | 0 | - | 68 | 39% | 1,498 | 47% |
| Graduate | <u>2,910</u> | 44% | <u>1,825</u> | 47% | <u>1,694</u> | 80% | <u>994</u> | 33% | <u>7,423</u> | 48% |
| Total | 16,708 | 47% | 7,195 | 45% | 6,686 | 77% | 6,870 | 40% | 37,459 | 48% |
| Women | | | | | | | | | | |
| First-time DS College | 3,450 | 53% | 637 | 59% | 283 | 22% | 310 | 60% | 4,680 | 50% |
| Other Undergraduate | 10,928 | 52% | 5,342 | 57% | 1,245 | 24% | 7,756 | 58% | 25,271 | 51% |
| First Professional | 688 | 56% | 886 | 50% | 0 | - | 108 | 61% | 1,682 | 53% |
| Graduate | <u>3,651</u> | 56% | <u>2,086</u> | 53% | <u>426</u> | | | | | |

Table 5. Headcount Students by Gender and Ethnicity (continued)

| Data - Classification | HC | % | HC | % | HC | % | HC | % | HC | % |
|-------------------------------|------------|----------|------------|----------|-----------|----------|-----------|----------|------------|----------|
| B. Ethnicity * | | | | | | | | | | |
| Am Indian/Alaskan Native | | | | | | | | | | |
| First-time DS College | 9 | 0% | 2 | 0% | 4 | 0% | 2 | 0% | 17 | 0% |
| Other Undergraduate | 39 | 0% | 33 | 0% | 20 | 0% | 47 | 0% | 139 | 0% |
| First Professional | 7 | 1% | 10 | 1% | 0 | - | 1 | 1% | 18 | 1% |
| Graduate | <u>14</u> | 0% | <u>15</u> | 0% | <u>6</u> | 0% | <u>11</u> | 0% | <u>46</u> | 0% |
| Total | 69 | 0% | 60 | 0% | 30 | 0% | 61 | 0% | 220 | 0% |
| Asian | | | | | | | | | | |
| First-time DS College | 162 | 2% | 112 | 11% | 42 | 3% | 31 | 6% | 347 | 4% |
| Other Undergraduate | 481 | 2% | 490 | 6% | 140 | 3% | 610 | 5% | 1,721 | 4% |
| First Professional | 37 | 3% | 290 | 17% | 0 | - | 9 | 5% | 336 | 11% |
| Graduate | <u>118</u> | 2% | <u>120</u> | 3% | <u>44</u> | 2% | <u>65</u> | 2% | <u>347</u> | 2% |
| Total | 798 | 2% | 1,012 | 7% | 226 | 3% | 715 | 4% | 2,751 | 4% |
| Pacific Islander | | | | | | | | | | |
| First-time DS College | 2 | 0% | 0 | 0% | 1 | 0% | 1 | 0% | 4 | 0% |
| Other Undergraduate | 12 | 0% | 11 | 0% | 9 | 0% | 15 | 0% | 47 | 0% |
| First Professional | 0 | 0% | 2 | 0% | 0 | - | 0 | 0% | 2 | 0% |
| Graduate | <u>1</u> | 0% | <u>2</u> | 0% | <u>4</u> | 0% | <u>2</u> | 0% | <u>9</u> | 0% |
| Total | 15 | 0% | 15 | 0% | 14 | 0% | 18 | 0% | 62 | 0% |
| African-American Non-Hispanic | | | | | | | | | | |
| First-4(t)-47.ican Non-panic | | | | | | | | | | |